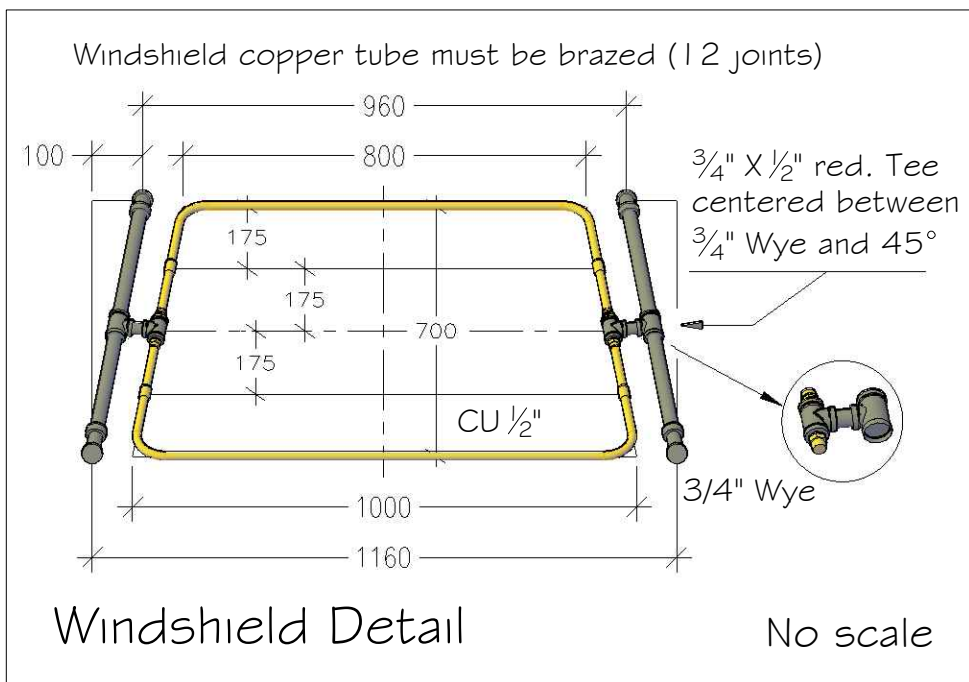


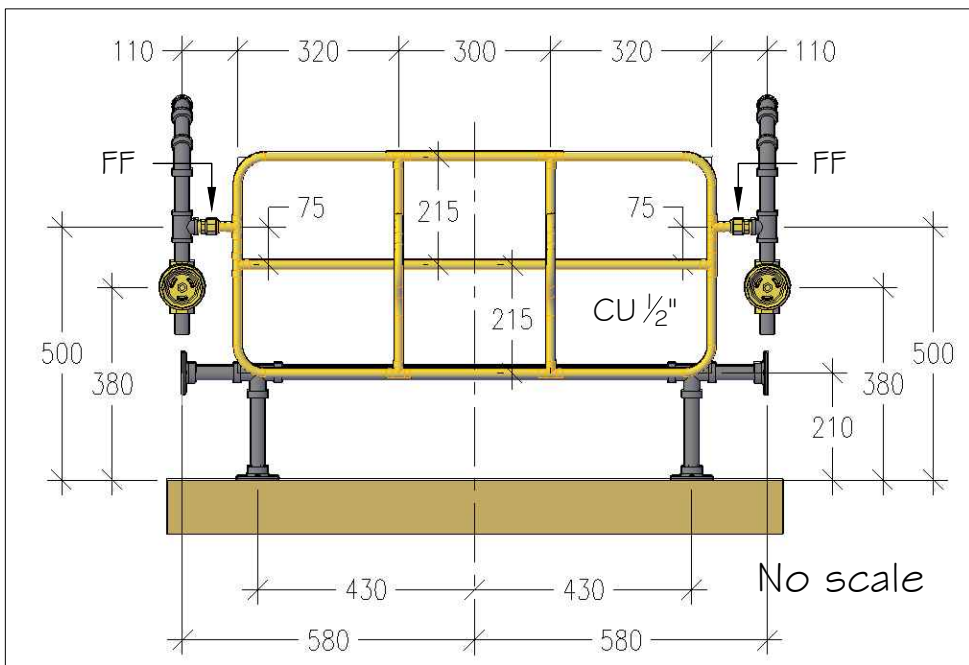
Isometric View

No scale



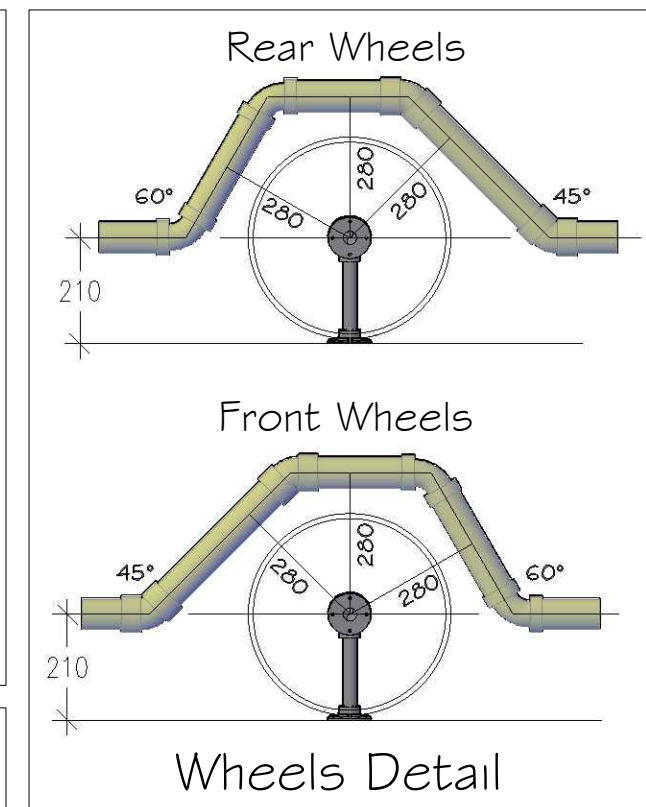
Windshield Detail

No scale

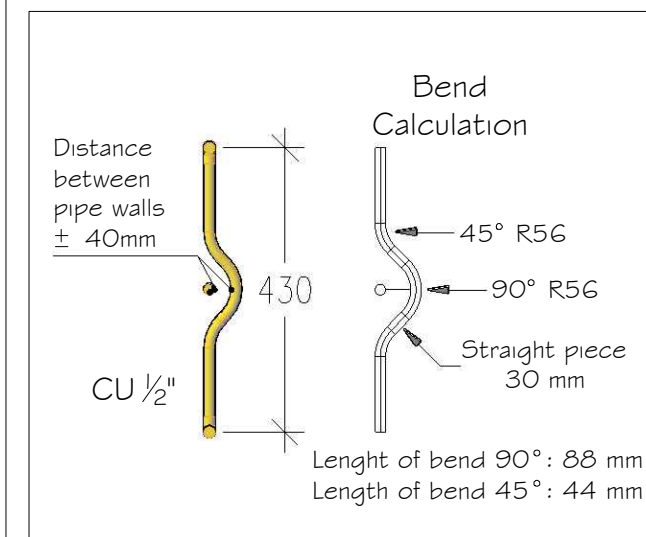


Radiator Grill and Axles Detail

No scale



Wheels Detail



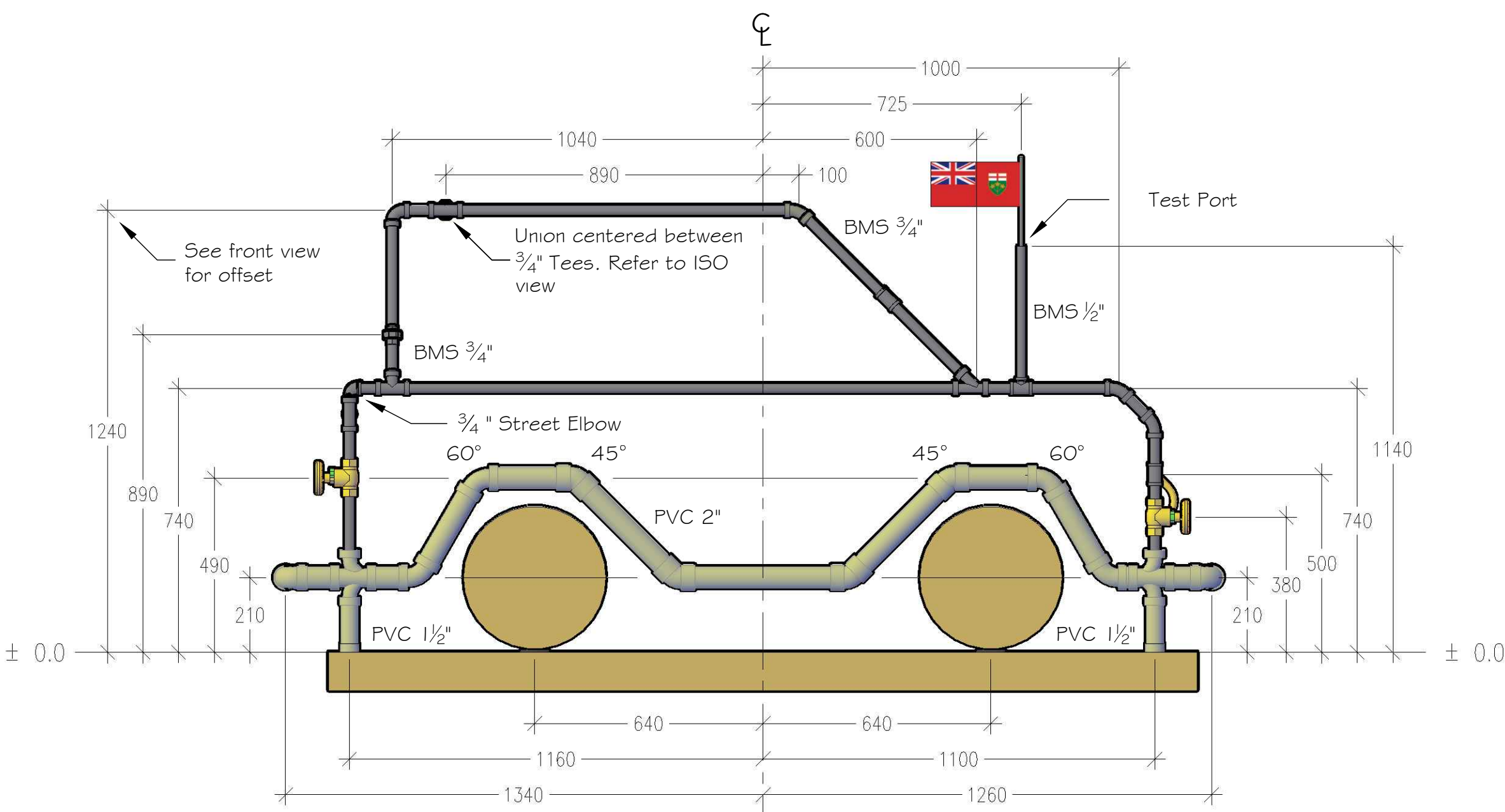
Bends Detail

Specifications

1. The metric system is applied for all measurements with a tolerance of 2 mm to obtain all points.
2. All measurements are in millimeters only.
3. Copper joints will be made with "no lead solder" on the radiator grill but the copper windshield must be joined with silver brazing.
4. All copper bends will be made with a 5/8" mechanical hand bender. Bends in the drawing are calculated with the Ridgid bender no. 310 (Radius 56 mm).
5. Copper and steel piping will be tested with air pressure (50 psi).
6. The copper bends crossing over the black steel pipe must be symmetrical and centered over it. See clearance space specified in bends detail.
7. All horizontal pipes must be leveled.
8. All vertical pipes must be plumbed.
9. All PVC fittings must be glued. Judges will check several of them for proper inserting.
10. No sanding / polishing on copper piping is allowed.
11. The candidate must install the air testing assembly.
12. The testing procedures will be explained by the judges before competition, during orientation.
13. Note that the judged decision will be final.
14. The annotations on the plan are labeled like the symbols used in the world competition.
15. The execution time will be considered to break a tie situation. (Explained during orientation)
16. Safety rules will be applied and assessed during all the competition.
17. Wheels and wheel axles will be fixed by the organization before competition.

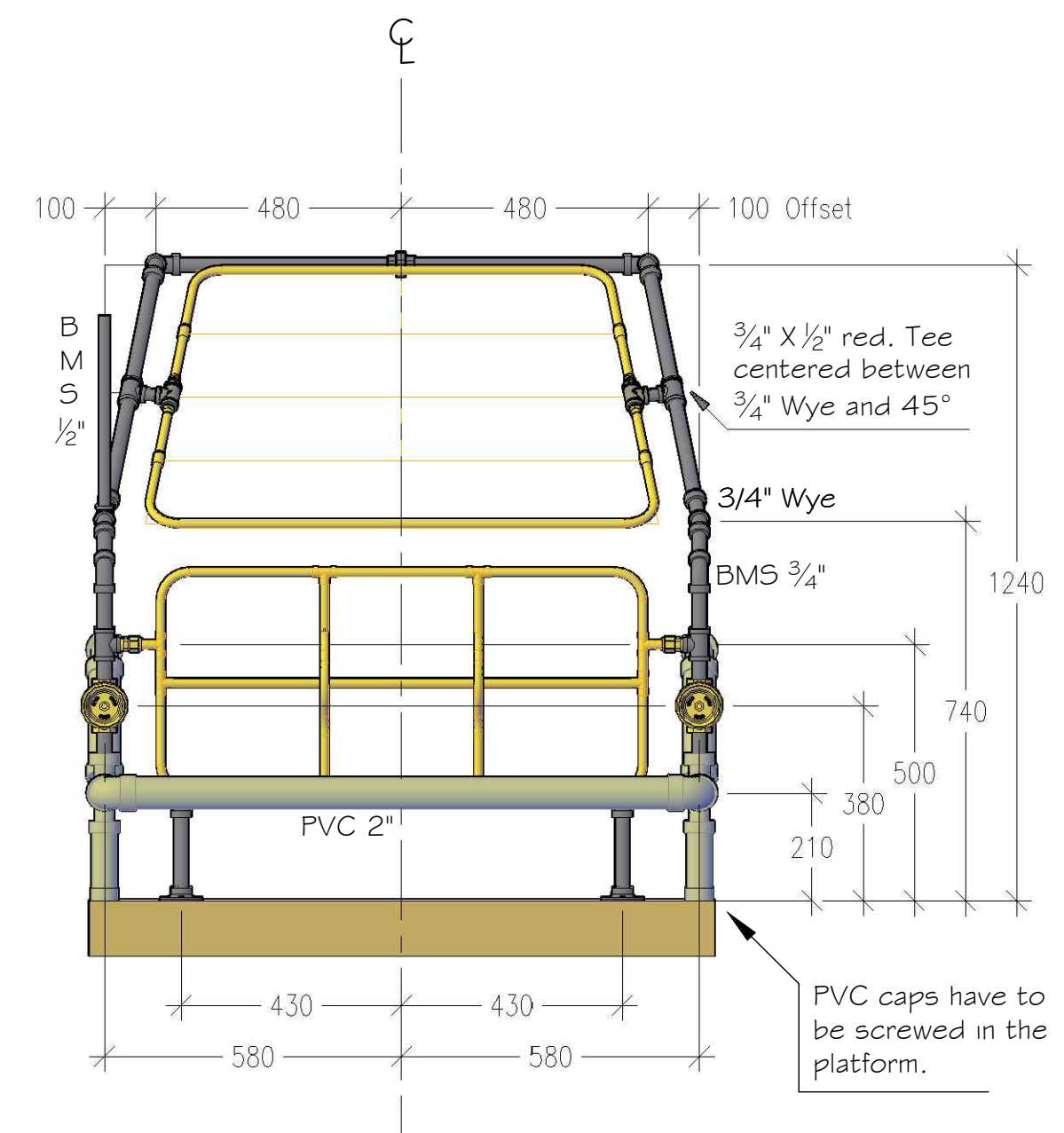
Legend

- PVC 2" : 2" PVC DWV Plastic Pipe
- PVC 1 1/2" : 1 1/2" PVC DWV Plastic Pipe
- BMS 3/4" : 3/4" Black Malleable Pipe (Black on drawing)
- BMS 1/2" : 1/2" Black Malleable Pipe (Black on drawing)
- CU 1/2" : 1/2" Type L copper tube (Yellow on drawing)
- SS : Soft soldering on copper tube
- HS : Hard soldering on copper tube (45% Silver brazing)
- FF : Flaired fitting: 1/2" Male pipe connector X Flair



Left Side View

No scale



Front View

No scale